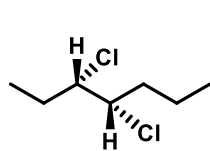
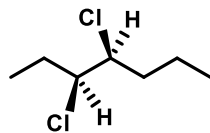


8 Stereochemistry

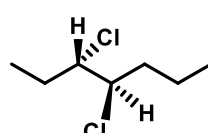
8.1 Assign R or S configurations to each chiral center on all four of the following isomers.



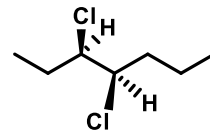
A



B



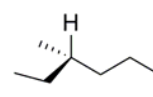
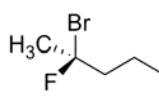
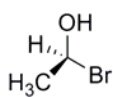
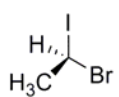
C



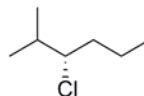
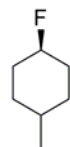
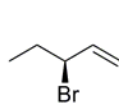
D

- Are there any conformers? If so which two compounds are conformers?
- Are any two isomers enantiomers? If so which compounds are enantiomers?
- Are any of these compounds diastereomers? Which ones?

8.2 Identify the chirality (R/S) of the following compounds:



8.3 Name the following molecules. Include chirality (R/S):



8.4 Draw the following molecules. Use dashes/wedges to show chirality:

- (R) 2-bromopentane
- (S) 2-bromo-3,3-dimethylpentane
- (R) 1-bromo-1-chloro-2,2-dimethylpropane